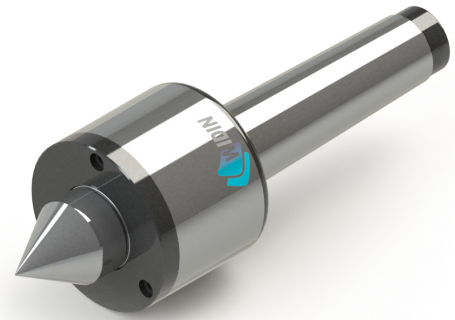
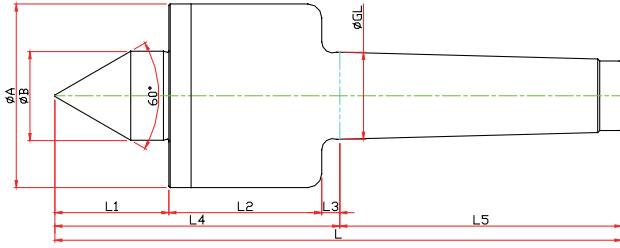


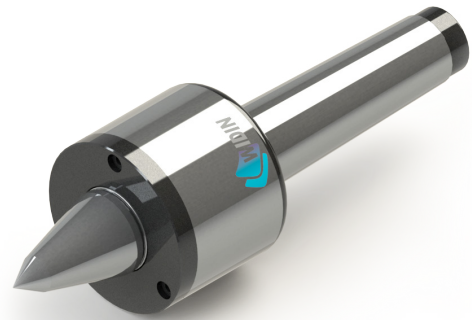
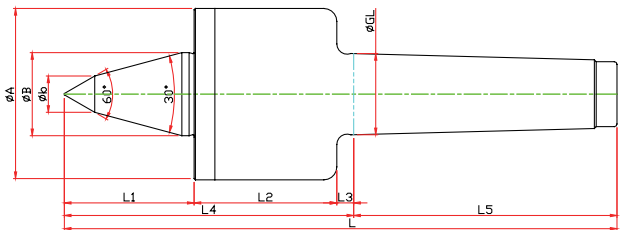
# SM-TYPE



Model	Order Number	Morse Taper	Dimension										Weight MAX.	R.P.M MAX.	Run Out
			GL	A	B	L1	L2	L3	L4	L5	L				
LC-3SM	040003	NO.3	23,825	52	22	30	51	5	86	81	167	330	12000	0.003	
LC-4SM	040004	NO.4	31,267	66	32	41	55	6.5	102.5	101.5	204	1100	10000	0.003	
LC-5SM	040005	NO.5	44,399	82	40	51	75	6.5	132.5	129.5	262	2200	8000	0.005	

# SMB-TYPE

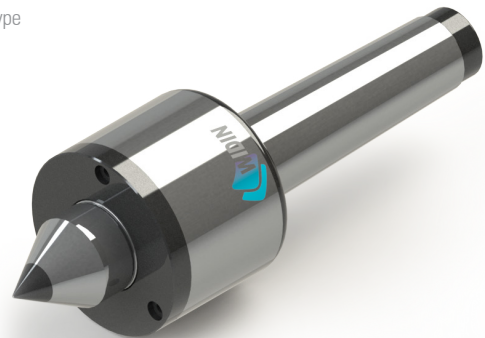
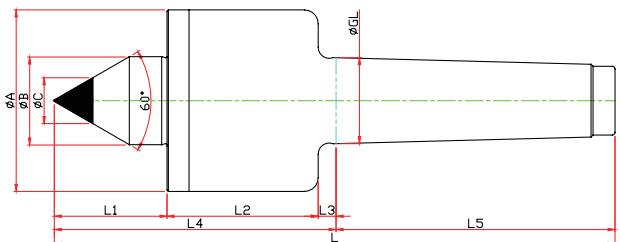
※ SHAFT 확장(바이트 간섭 최소화) SHAFT EXTENTION(Minimize the bite-interference)



Model	Order Number	Morse Taper	Dimension										Weight MAX.	R.P.M MAX.	Run Out
			GL	A	B	b	L1	L2	L3	L4	L5	L			
LC-3SMB	041003	NO.3	23,825	52	22	10	40	51	5	96	81	177	160	12000	0.003
LC-4SMB	041004	NO.4	31,267	66	32	14	50	55	6.5	111.5	101.5	213	520	10000	0.003
LC-5SMB	041005	NO.5	44,399	82	40	16	65	75	6.5	146.5	129.5	276	940	8000	0.005

# SMC-TYPE

※ 초경타입 Carbide Type



Model	Order Number	Morse Taper	Dimension										Weight MAX.	R.P.M MAX.	Run Out
			GL	A	B	L1	L2	L3	L4	L5	C	L			
LC-3SMC	040103	NO.3	23,825	52	22	30	51	5	86	81	10	167	330	12000	0.003
LC-4SMC	040104	NO.4	31,267	66	32	41	55	6.5	102.5	101.5	14	204	1100	10000	0.003
LC-5SMC	040105	NO.5	44,399	82	40	51	75	6.5	132.5	129.5	18	262	2200	8000	0.005

NC-TYPE

NCP-TYPE

NK-NKD TYPE

GR-SM TYPE

SMP-TYPE

D50 TYPE

HD-TYPE

PT-TYPE

LM CENTER

LM-H CENTER